



CUTRIN

AURORA

COLOR REFLECTIONS

COLOR GUIDE

CONTENTS

CUTRIN AURORA	3
SOME CHROMATICS:	
PRIMARY COLOR, SECONDARY COLOR, COMPLEMENTARY COLOR	4
DARKNESS, SHADE, CUTRIN NUMBERING SYSTEM	6
CUTRIN AURORA PERMANENT COLOR	8
CUTRIN AURORA AMMONIA-FREE HAIR COLOR	18
CUTRIN AURORA BRIGHTENING AMMONIA-FREE SHADES	24
CUTRIN AURORA MIXER COLOR BOOSTERS	25
CUTRIN AURORA LIGHTENING PRODUCTS	26
CUTRIN AURORA POROSITY FILLER	27

AURORA

COLOR REFLECTIONS

COLOR GUIDE

Color is light and Nordic light has its richest hues at sunrise and sunset. Cutrin Aurora hair colors reflect Nordic nature through the handiwork of hairdressers. Cutrin Aurora hair color offer unbelievable shades inspired by the reflections of the first and last rays of sunlight in the sky.

SOME CHROMATICS: PRIMARY COLOR, SECONDARY COLOR, COMPLEMENTARY COLOR

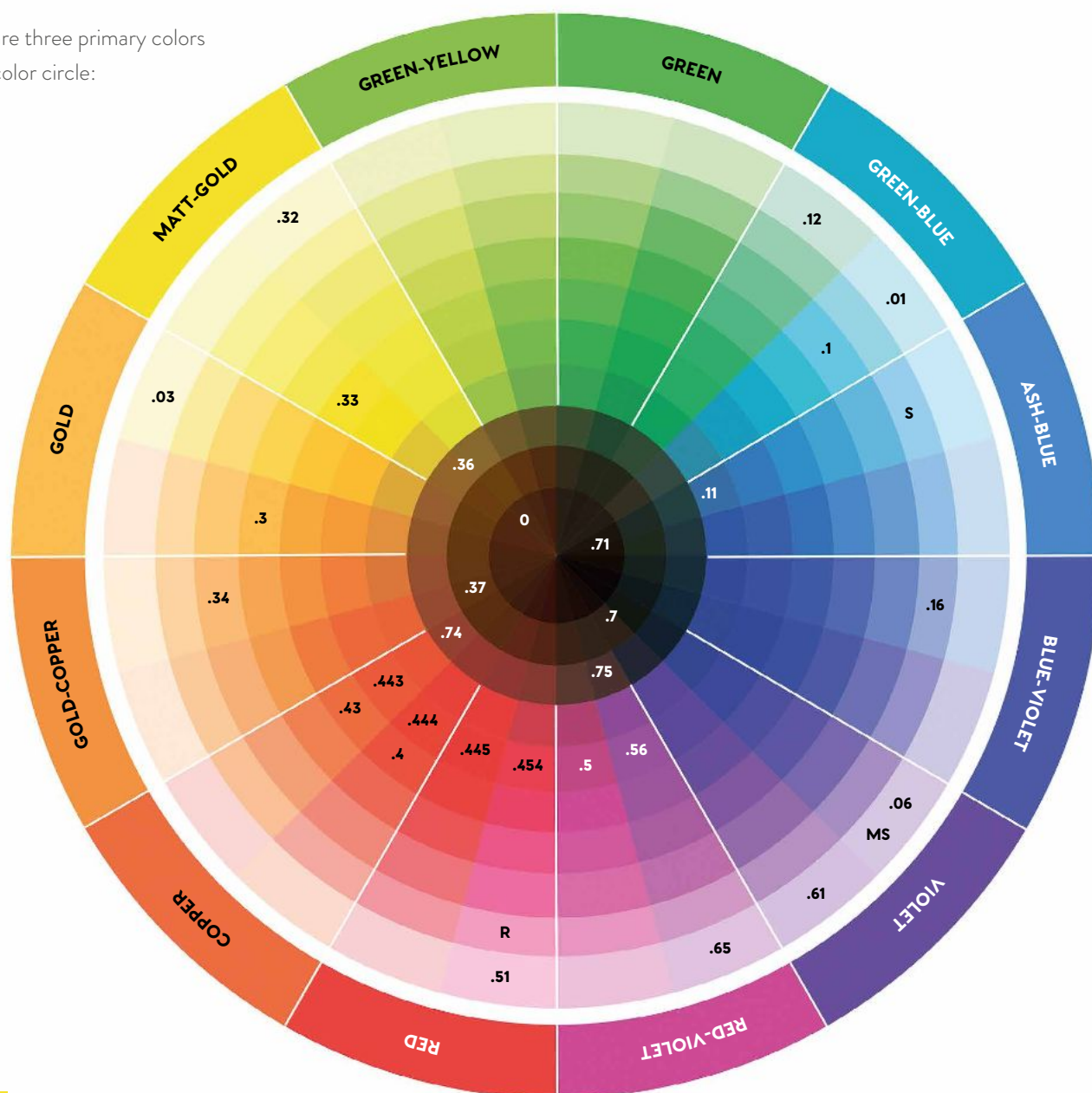
PRIMARY COLORS

There are three primary colors
in the color circle:

Yellow

Red

Blue



0.33	Color booster
0.43	Color booster
0.44	Color booster
0.56	Color booster
0.11	Color booster
D 0.00	Gradient coloring shade for Aurora permanent colors
D 0.00	Gradient coloring shade for Aurora ammonia-free hair colors
B 0.00	Lightening color booster (use only with Aurora special lightening colors)

SECONDARY COLORS

Secondary colors are formed by mixing two primary colors
together:

Red + blue → violet

Red + yellow → orange

Yellow + blue → green

COMPLEMENTARY COLORS

Colors that are completely opposite to each other in the color circle are called complementary colors.
When two complementary colors are mixed together, they neutralize each other.

Green neutralizes red

Blue neutralizes orange

Violet neutralizes yellow

COMPLEMENTARY COLOR THEORY IN PRACTICE:

LIGHTENING BASE LINE



Lightening in the segment 1–6
Brings out red

Lightening in the segment 6–8
Brings out orange

Lightening in the segment 8–10
Brings out yellow

COMPLEMENTARY COLOR
GREEN

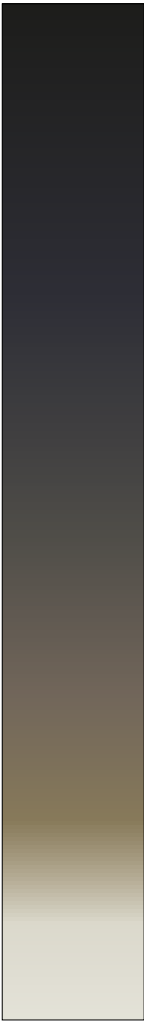
COMPLEMENTARY COLOR
BLUE

COMPLEMENTARY COLOR
VIOLET

COMPLEMENTARY COLOR LINE

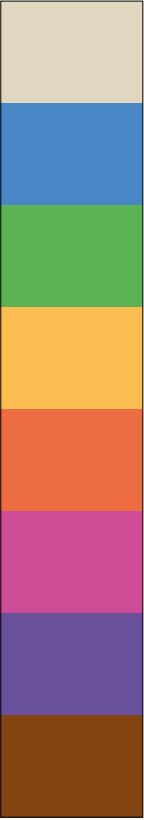
DARKNESS; SHADE CUTRIN NUMBERING SYSTEM

Cutrin Aurora hair colors indicate the darkness of the shade on a scale of 1–10. On the scale, 1 is the darkest, while 10 is the lightest.



- 1 Black
- 2 Very dark brown
- 3 Dark brown
- 4 Medium brown
- 5 Light brown
- 6 Dark blond
- 7 Medium blond
- 8 Bright blond
- 9 Very bright blond
- 10 Pure blond

Shade or hue refers to the appearance of the shade. Cutrin shades are numbered according to the system below:



- 0 Basic shades (natural shades)
- 1 Ash = blue > complementary color techniques
- 2 Matte = green > complementary color techniques
- 3 Gold = yellow
- 4 Copper = red-orange
- 5 Mahogany = red-violet
- 6 Violet = blue-violet
- 7 Brown

NUMBERING SYSTEM

E.G. SHADE



- The second number after the main hue tells you the direction of the secondary hue in the main hue.
- Having the same number repeated three times (e.g. 8.444) means that the color is very intense.
- The letter 'G' (e.g. 6.37G) tells you that this is a grey coverage shade.
When the color is mixed alone with developer, the grey coverage capacity is 100%.

CUTRIN AURORA PERMANENT COLOR

Thanks to innovative Cutrin Color Radiance technology, the color molecules and natural arctic active ingredients of the emulsion mix evenly with the developer and find their way to the hair effortlessly. This new technology enables complete grey coverage. The conditioning formula is gentle on the hair and scalp and effectively prevents coloring the scalp. Thanks to Cutrin Color Radiance technology, hair feels smooth and looks shiny and conditioned after coloring.

The optimal emulsion protects the colorants, allowing the color to develop only after it is inside the hair. The color molecules lock inside the hair, which is why the hair color stays intense even after several washes. Cutrin Aurora permanent colors contain nourishing natural active ingredients, such as Nordic berry oils. These help to repair and protect hair against damage. Thus, hair stays in good condition and is easy to manage during the color treatment. Thanks to the new formula of the permanent color, the coloring experience is even more pleasant than before.

PACKAGING



Cutrin Aurora Permanent permanent colors 60 ml

Cutrin Aurora Permanent High Lift permanent colors 60 ml

Cutrin Aurora Permanent Harmony permanent colors 60 ml

Cutrin Aurora Permanent Metallic permanent colors 60 ml

Cutrin Aurora Developer 1,000 ml

SHADE WORLD OF CUTRIN PERMANENT COLORS:

NORDIC NATURALS – Natural shades inspired by Nordic nature, grey coverage approx. 100%

1.0, 3.0, 4.0, 5.0, 6.0, 7.0, 8.0, 9.0

SUN NEVER SETS – Special lightening colors and lightening color booster for strong lightening coloring, grey coverage approx. 30%

11.0, 11.12, 11.16, 11.36, B0.00

BORN TO BE BLONDE – Natural blonds, grey coverage approx. 30%

10.0, 10.06, 10.1, 10.16, 10.36, 10.71, 10.75

SWEET DREAMS – Sophisticated metallic shades

7R, 8R, 9R, 7S, 8S, 9S, 7MS, 8MS, 9MS

DRIFTWOOD – Cool ash shades, grey coverage approx. 70%

5.1, 7.1, 8.1, 9.1

ARCTIC STONE – Shades inspired by dark rocks, grey coverage approx. 70%

2.11, 2.16, 4.16, 6.16, 7.16, 9.16

MIDSUMMER SUN – Golden brown shades warmed by the sun, grey coverage approx. 70%

3.3, 5.3, 6.3, 7.3, 8.3, 9.3

LAKE SIDE SILENCE – Beautiful sand shades, grey coverage approx. 70%

7.36, 8.36, 9.36

DEEP FOREST – Intense browns covering grey by 100%

4.37G, 5.37G, 6.37G, 7.37G, 8.37G, (9.37)*

*9.37 is not a grey coverage shade

AUTUMN SUNSET – Warm, lustrous copper shades, grey coverage approx. 70%

6.4, 7.4, 8.4, 9.34, 5.43, 6.43, 8.43

BERRY BOOST – Intense shades inspired by red berries, grey coverage approx. 70%

6.443, 7.443, 8.444, 5.445, 7.445, 6.454

NORDIC NIGHTS – Cool mahoganies for strong expression, grey coverage approx. 70%

3.5, 5.5, 3.56, 5.56, 6.56, 9.56

COFFEE BREAK – Delicious and richly toned browns, grey coverage approx. 70%

4.7, 5.7, 6.7, 7.7, 8.7, 9.7, 5.74, 6.74, 7.74, 8.74, 4.75, 5.75, 6.75

PEACE & HARMONY – Harmonizing shades for equalizing color and refracting yellow after lightening

0.01, 0.32, 0.06, 0.03

NORDIC LIGHTS – Gradient coloring shade

D0.00

AURORA COLOR TABLE

CURTIN AURORA						
	NEUTRALS	ASH	ASH	GOLD	SAND	BROWN
	NORDIC NATURALS	DRIFTWOOD	ARCTIC STONE	MIDSUMMER SUN	LAKE SIDE SILENCE	DEEP FOREST
	.0 Natural shades	.1 Ash	.16 Ash violet .11 Blue	.3 Gold	.36 Matte gold	.37 Golden brown
	100% Coverage	70% Coverage	70% Coverage	70% Coverage	70% Coverage	G 100% Coverage
10. PURE BLOND	10.0					
9. VERY BRIGHT BLOND	9.0	9.1	9.16	9.3	9.36	9.37
8. BRIGHT BLOND	8.0	8.1		8.3	8.36	8.37 G
7. MEDIUM BLOND	7.0	7.1	7.16	7.3	7.36	7.37 G
6. DARK BLOND	6.0		6.16	6.3		6.37 G
5. LIGHT BROWN	5.0	5.1		5.3		5.37 G
4. MEDIUM BROWN	4.0		4.16			4.37 G
3. DARK BROWN	3.0			3.3		
2. VERY DARK BROWN			2.11, 2.16			
1. BLACK	1.0					
1:1, waiting time 30–45 minutes						

PERMANENT COLORS

KUPARI	PUNAINEN	VIOLETTI	BLOND 11 series: 1:2	BLOND 10 series: 1:1	METALLIC SHADES: 1:1	BLONDS For neutralizing and brightening: 1:2	11 SERIES BOOSTER Max. 50% of amount of color mass	MIXER SHADES Max. 10% of the amount of color mass
AUTUMN SUNSET	BERRY BOOST	NORDIC NIGHTS	SUN NEVER SETS	BORN TO BE BLONDE	SWEET DREAMS	PEACE & HAR- MONY	SUN NEVER SETS	NORDIC LIGHTS
.34 Gold-copper .4 Copper .43 Copper-gold	.444 Intense copper .443 Intense copper-gold .445 Intense red .454 Intense cold red	.5 Mahogany .56 Mahogany violet	.0 Neutral .12 Matte ash .16 Ash violet .36 Matte gold	.0 Neutral .06 Violet .1 Ash .16 Ash violet .36 Matte gold .71 Ash brown .75 Mahogany brown	R Rose S Silver MS Matte sand	.01 Ash .32 Matte gold .06 Violet .03 Gold	.00 Bright high lift booster	.00 Bright .11 Blue .33 Gold .43 Gold-copper .44 Red .56 Violet
70% Coverage	70% Coverage	70% Coverage	30% Coverage	30% Coverage				
			11.0 11.12 11.16 11.36	10.0 10.06 10.1 10.36 10.71 10.75	9R, 9S, 9MS 8R, 8S, 8MS 7R, 7S, 7MS	0.01 0.32 0.06 0.03	B0.00	D 0.00 0.11 0.33 0.43 0.44 0.56
9.34		9.56						
8.4, 8.43	8.444							
7.4	7.443, 7445							
6.4, 6.43	6.443, 6.454	6.56						
5.43	5.445	5.5, 5.56						
		3.5, 3.56						
			1:2, waiting time 45-60 min	1:1, waiting time 30-45 min	1:1, waiting time 30-35 min	1:2, waiting time 10 + 10 min	1:2, waiting time 10 + 10 (max. 20) min	Waiting time determined according to the main color

CHOICE OF DEVELOPER FOR CUTRIN AURORA PERMANENT COLOR

3 %	Coloring to the same darkness or darker
4,5 %	Coloring to the same darkness or darker
6 %	Coloring to the same darkness when it is desirable to foreground the color's shade appearance for lightening by ½–1 levels Coloring with red color when coloring untreated hair Grey hair coloring
9 %	For lightening by 2 levels
12 %	For lightening by 3 levels For lightening by 4 levels with special lightening colors

Cutrin Aurora permanent color mixing ratio:

Cutrin Aurora permanent color is mixed with Cutrin Aurora developer in a proportion of 1:1. Use the aid of a color scale. In this way, an accurate mixing ratio will be attained. Note! The mixing ratio of special lightening colors (11 series) and Peace & Harmony shades (0.01, 0.32, 0.06 and 0.03) is 1:2.

Cutrin Aurora permanent color application:

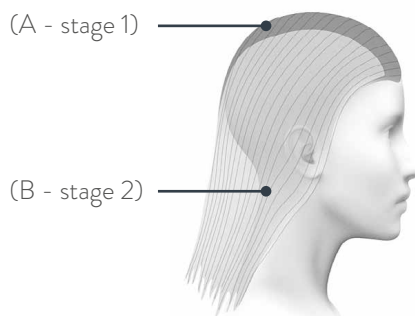
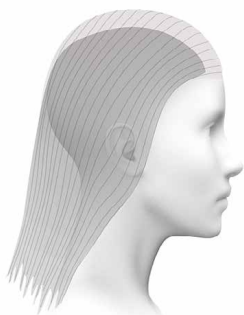
Apply the color mixture dry, unwashed hair. If hair contains many styling products, it must be washed and dried before coloring.

Cutrin Aurora permanent color waiting time:

The normal waiting time is 30 min. When lightening hair (darkness levels 9–10), the waiting time can be extended 5–15 min. as needed.

Treatment after Cutrin Aurora permanent color:

After the waiting time, emulsify the hair and scalp thoroughly with a small amount of water. After emulsifying, wash and condition hair with a Cutrin shampoo and conditioner that is suitable for the hair type.



First coloring with Cutrin Aurora permanent color for non-colored hair: Apply the Cutrin Aurora permanent color mixture first to the lengths and tips (approx. 2 cm from the root area), using a stronger developer.

After this, apply the Cutrin Aurora permanent color mixture to the roots and leave in for 30 min.

(A) Root coloring with Cutrin Aurora permanent color and (B) Color equalizing for hair lengths with Cutrin Aurora ammonia-free hair color:

(A – Stage 1) Apply the Cutrin Aurora permanent color mixture to the non-colored root area. Leave in for 30 minutes.

(B – Stage 2) Apply the Cutrin Aurora ammonia-free hair color mixture to hair lengths and tips and leave in for the last 10–20 min. of stage 1.

Using permanent color and ammonia-free color together will retain optimal hair condition and shine.

Coloring darker with Cutrin Aurora permanent color:

When you are darkening untreated hair by 2 levels or more, add a natural shade to the fashion shade.

Grey hair coloring with Cutrin Aurora permanent color:

When coloring 50–100% grey hair, mix together 1/3–1/2 natural shade and 2/3–1/2 fashion shade. Choose the developer strength according to the hair's natural (not grey) color. When coloring grey hair, you should nevertheless use a Cutrin Aurora developer of at least 6% to attain an intense end result.

- **Cutrin Aurora grey coverage shades 4.37G, 5.37G, 6.37G, 7.37G and 8.37G:**

Used when the customer has 20–100% grey hair.

- Use as it is (no need to mix in any natural series).
- Choose the developer strength according to the hair's natural (not grey) color. When coloring grey hair, you should nevertheless use a Cutrin Aurora developer of at least 6% to attain an intense end result.
- The result will match the color chart when the customer's hair is approx. 70% grey.

USING CUTRIN AURORA SPECIAL LIGHTENING COLORS

The Cutrin 11 series shades are intended for lightening non-colored hair. Colored hair cannot be lightened with special lightening colors.

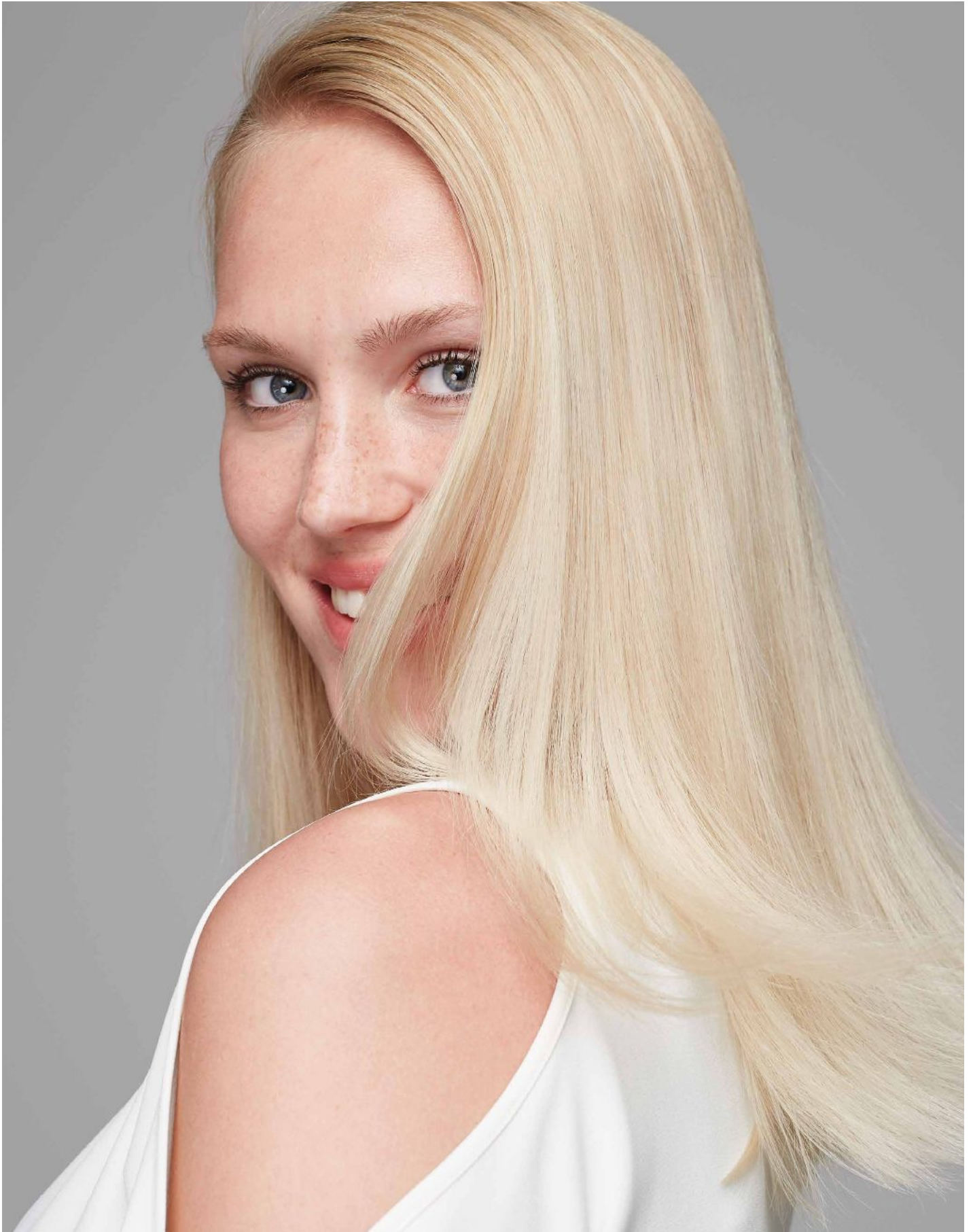
The Cutrin Aurora 11 series shades attain lightening by 4 levels. Base 6 is thus the darkest shade for attaining level 10 darkness. It is important to remember the lightening effect and mixing ratio of the various developers (see table).

Coloring lighter nearly always involves working with complementary colors in order to bring about pure blonds. The color line and color circle on pg. 4–5 will help you choose the right shade.

CUTRIN PERMANENT COLORS BASIC SHADES	CUTRIN DEVELOPER
0 lightening level	3 %/4,5 %
1 lightening level	6 %
2 lightening level	9 %
3 lightening level	12 %

CUTRIN SPECIAL LIGHTENING COLORS	CUTRIN DEVELOPER
1 lightening level	-
2 lightening level	-
3 lightening level	9 %
4 lightening level	12 %

B0.00 booster for lightening color is intended for use together with Cutrin Aurora lightening colors. Do not use B0.00 booster for lightening color together with other Cutrin Aurora colors. B0.00 raises the lightening effect by up to 1 level. The mixing ration is 15 g B0.00 + 15 g lightening color + 60 g developer.



COLORING LIGHTER WITH CUTRIN AURORA LIGHTENING COLOR

LIGHTENING BASE LINE



Lightening in the segment 1–6
Brings out red

COMPLEMENTARY COLOR
GREEN

Lightening in the segment 6–8
Brings out orange

COMPLEMENTARY COLOR
BLUE

Lightening in the segment 8–10
Brings out yellow

COMPLEMENTARY COLOR
VIOLET



The choice of Cutrin Aurora lightening colors:

For refracting warm tones brought out by lightening, 11.16 and 11.12 function as complementary colors.

For attaining warm blond end results, you should use shades 11.0 and 11.36.

Cutrin Aurora lightening color mixing ratio:

The mixing ratio of Cutrin Aurora 11 series colors is 1:2 (e.g. 30 g Cutrin permanent color and 60 g Cutrin Aurora developer). Choose the developer according to the desired lightening level (see table on pg. 14).

Mix Cutrin Aurora special lightening colors, using the aid of a color scale. In this way, an accurate mixing ratio will be attained. Always mix the developer and color mixture thoroughly and let rest for 3–5 min.

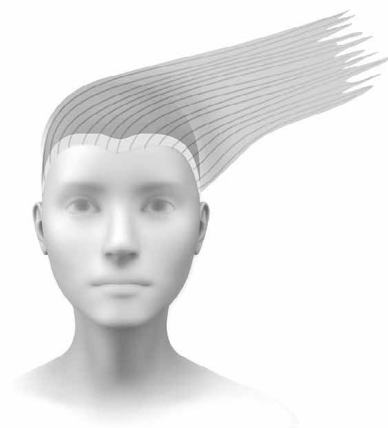
Cutrin Aurora lightening color application:

Apply the color mixture dry, unwashed hair. Apply color in the normal way, observing the more porous hairline areas (running approx. 1 cm from the edge of one temple past the forehead to the other temple). Apply color to the edge areas only for the last 10 minutes of the waiting time in order to avoid fixing neutralizing pigments into the more porous hair.

Cutrin Aurora lightening color waiting time:

The waiting time for special lightening colors is 45–60 min.

NOTE! We don't recommend using any extra heat with special lightening colors.



Treatment after Cutrin Aurora lightening color:

After the waiting time, emulsify the hair and scalp thoroughly with a small amount of water. In this way, you'll also avoid fixing toner pigments to parts that have been lightening color treated earlier. After emulsifying, wash and condition hair with a Cutrin shampoo and conditioner that is suitable for the hair type.

Observe when coloring lighter with Cutrin Aurora lightening colors:

- Please note that using foil or cling film in connection with lightening color may cause local warming.
- Airiness to the mass of hair should be provided by lifting during the color's waiting time. It's better to avoid tight snubs and mounds of hair.
- Never use metal clips in connection with color treatment.
- It is advisable to observe the sensations of your customer's scalp during the waiting time. You should always discontinue treatment if your customer notices exceptional sensations, such as burning.

Sweet Dreams metallic shades:

Cutrin Aurora metallic shades are intended primarily for toning lightened hair. They are especially suitable for refracting (frozen steel, metallic sand) or softening (nude rose) warm shades brought out by lightening.

On a natural base, you can attain an end result that is ½–1 levels lighter with metallic shades. When you are aiming for an end result that is lighter by several levels, you should first do a lightening treatment with Cutrin Aurora bleach according to directions. After this treatment, tone hair with the desired Cutrin Aurora metallic shade.

Cutrin Aurora metallic shades are used together with 3%, 4.5% or 6% developer. The mixing ratio is 1:1. The waiting time is 30–35 min.

Peace & Harmony shades:

Cutrin Aurora Peace & Harmony shades are intended for refracting yellow in lightened hair, together with 3% Cutrin Aurora developer. The mixing ratio is 1:2. Apply color mixture to towel dry hair. When neutralizing undesirable tinges, the waiting time is 10 min. If you're aiming for a brighter end result, you can extend the waiting time up to 20 minutes.

D0.00 gradient color:

Cutrin Aurora D0.00 functions as a gradient mixture together with Cutrin Aurora permanent colors, meaning that its task is to lighten the fashion color on a gradient. The end result is lighter by 1 level (e.g. shade 6.7 will give an end result of 7.7). Gradient coloring with shade 0.00: Mix 30 g developer + 15 g permanent color + 15 g D0.00 permanent color.

CUTRIN AURORA AMMONIA-FREE HAIR COLOR

Cutrin Aurora ammonia-free hair color is perfect for hair that has already been colored or lightened. Result: a new kind of shiny and glowing hair color that pampers the hair.

Thanks to innovative Cutrin Color Radiance technology, the color molecules and natural arctic active ingredients of the emulsion mix evenly with the developer and find their way to the hair effortlessly. The conditioning formula prevents coloring the scalp. Thanks to Cutrin Color Radiance technology, hair feels smooth and looks shiny and conditioned after coloring.

The optimal emulsion protects the colorants, allowing the color to develop only after it is inside the hair. The color molecules lock inside the hair, which is why the hair color stays intense even after several washes. Cutrin Aurora ammonia-free hair colors contain nourishing natural active ingredients, such as vegetable oils. These help to repair and protect hair against damage. Thus, hair stays in good condition and is easy to manage during the color treatment. Thanks to the new formula of ammonia-free hair colors, containing beeswax, the coloring experience is even more pleasant than before.

PACKAGING



Cutrin Aurora Demi Permanent ammonia-free hair colors 60 ml

Cutrin Aurora Demi Permanent Brightening ammonia-free hair colors 60 ml

Cutrin Aurora Demi Permanent Luminous ammonia-free hair colors 60 ml

Cutrin Aurora Developer 1,000 ml

SHADE WORLD OF CUTRIN AMMONIA-FREE COLORS

NORDIC NATURALS – Natural shades inspired by Nordic nature

1.0, 3.0, 4.0, 5.0, 6.0, 7.0, 8.0, 9.0

SUN-KISSED BLONDES – Gently brightening sun-kissed shades

SUN 0.0, SUN 0.16, SUN 0.36, SUN 0.7

BORN TO BE BLONDE – Natural blonds

10.0

COOL DOWN – Toners for refracting yellow and filler tone for restoring natural lustre to over-lightened hair

0.01, 0.03, 0.06

SOFT & SWEET – Glimmer shades for sophisticated refraction and toning of lightened hair

.12, .16, .32, .65

SWEET DREAMS – Sweet pastel shades

9.51, 9.61

DRIFTWOOD – Cool ash shades

7.1, 9.1

ARCTIC STONE – Shades inspired by dark rocks

4.16, 6.16

MIDSUMMER SUN – Golden brown shades warmed by the sun

3.3, 5.3, 6.3, 7.3,

LAKE SIDE SILENCE – Beautiful sand shades

7.36, 9.36

AUTUMN SUNSET – Warm, lustrous copper shades

6.4, 8.4, 8.43

BERRY BOOST – Intense shades inspired by red berries

6.443, 7.443, 5.445, 7.445

NORDIC NIGHTS – Cool mahoganies for strong expression

5.5, 3.56, 6.56

COFFEE BREAK – Delicious and richly toned browns

4.7, 6.7, 7.7, 8.7, 9.7, 5.74, 6.74, 7.74, 8.74, 4.75, 5.75, 6.75

NORDIC LIGHTS – Gradient coloring shade

D0.00

The grey coverage of Cutrin ammonia-free colors varies between 20% and 70%, depending on the shade's hue and darkness level. The darker the shade or the more intense the hue, the better the color coverage is.

AURORA COLOR TABLE

CUTRIN AURORA AMMO

	NEUTRALS	ASH	ASH	GOLD	SAND	SAND	COPPER
	NORDIC NATURALS	DRIFTWOOD	ARCTIC STONE	MIDSUMMER SUN	LAKE SIDE SILENCE	COFFEE BREAK	AUTUMN SUNSET
	.0 Natural shades	.1 Ash	.16 Ash violet	.3 Gold	.36 Matte Gold	.7 Brown .74 Copper brown .75 Mahogany brown	.34 Gold-copper .4 Copper
10. PURE BLOND	10.0						
9. VERY BRIGHT BLOND	9.0	9.1			9.36	9.7	
8. BRIGHT BLOND	8.0					8.7, 8.74	8.4, 8.43
7. MEDIUM BLOND	7.0	7.1		7.3	7.36	7.7, 7.74	
6. DARK BLOND	6.0		6.16	6.3		6.7, 6.74, 6.75	6.4
5. LIGHT BROWN	5.0			5.3		5.74, 5.75	
4. MEDIUM BROWN	4.0		4.16			4.7, 4.75	
3. DARK BROWN	3.0			3.3			
2. VERY DARK BROWN							
1. BLACK	1.0						

1:2, waiting time 20 minut

NIA-FREE COLORS							
RED	VIOLET	VIOLET	BLOND Brightening shades	BLOND	BLOND For neutralizing	SOFT TONING SHADES	MIXER SHADES Max. 10% of the amount of color mass
BERRY BOOST	SWEET DREAMS	NORDIC NIGHTS	SUN-KISSED BLONDES	BORN TO BE BLONDE	COOL DOWN	SOFT & SWEET	NORDIC LIGHTS
.444 Intense copper .443 Intense copper-gold .445 Intense red .454 Intense cold red	.51 Pastel pink .61 Pastel violet	.5 Mahogany .56 Mahogany violet	.0 Bright .16 Ash violet .36 Matte gold .7 Brown	.0 Neutral	.1 Ash .03 Gold .06 Violet	.12 Matte ash .16 Ash violet .32 Matte gold .65 Violet mahogany	.00 Bright .11 Blue .33 Gold .43 Gold-copper .44 Red .56 Violet
			SUN 0.00 SUN 0.16 SUN 0.36 SUN 0.7	10.0	0.01 0.03 0.06	.12 .16 .32 .65	D0.00 0.11 0.33 0.43 0.44 0.56
	9.51, 9.61						
7.443, 7445							
6.443		6.56					
5.445		5.5					
		3.56					
es					1:2, waiting time 5-15 min	1:2, waiting time 20 min	Waiting time determined according to the main color

CHOICE OF DEVELOPER FOR CUTRIN AURORA AMMONIA-FREE COLORS

1,5 %	Coloring to the same darkness or darker, a more glimmering end result For previously color treated hair Always in connection with a perm
3 %	Coloring to the same darkness or darker, a more glimmering end result
4,5 %	Coloring to the same darkness or darker, a more intense end result For brightening hair (normal demi colors by ½ level, demi brightening shades by 1–2 levels)

Mixing ratio of Cutrin Aurora ammonia-free color:

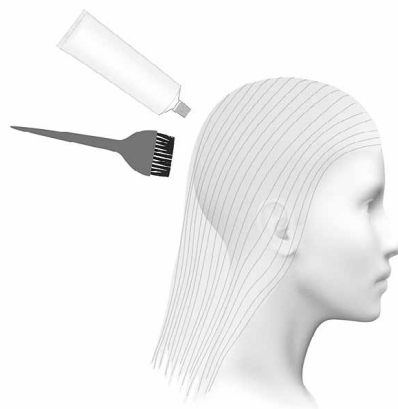
The mixing ratio of Cutrin Aurora ammonia-free hair colors is always 1 part color and 2 parts developer

(e.g. 30 g color and 60 g developer). Use the aid of a color scale.

In this way, an accurate mixing ratio will be attained.

Applying Cutrin Aurora ammonia-free color:

You can apply the color mass to dry well towel-dried hair either directly from the color application bottle or with the aid of a brush. If hair contains many styling products, wash and dry hair before coloring.



Waiting time of Cutrin Aurora ammonia-free color:

The waiting time is 20 min.

When brightening hair with Sun Kissed Blond shades, you can extend the waiting time up to 40 min.

Note that in connection with a perm, the waiting time is shorter: approx. 10–15 min.

Treatment after Cutrin Aurora ammonia-free color:

After the waiting time, emulsify hair thoroughly with a small amount of water. After emulsifying, wash and condition hair with a Cutrin shampoo and conditioner that is suitable for the hair type.

D0.00 functions as a gradient mixture together with Cutrin Aurora ammonia-free hair colors, meaning that its task is to lighten the fashion color on a gradient. The amount of D0.00 should be no more than 50% of the amount of color mixture (e.g. 15 g basic shade + 15 g D0.00 shade + 60 g developer).

COOL DOWN – Toners for refracting yellow and filler tone for restoring natural lustre to over-lightened hair

0.01 Use **Silver** when it is desirable to neutralize yellow-orange.

0.06 Use **Pearl** when it is desirable to neutralize yellow.

0.03 Gold gives over-lightened hair a light golden glow.

Shades 0.01, 0.06 and 0.03 are intended for use together with Cutrin Aurora 1.5% developer. The mixing ratio is 1 part color and 2 parts developer (e.g. 30 ml color and 60 ml Cutrin Aurora 1.5% developer). Apply the shade to lightened hair after it has been shampoo washed and towel dried, starting from the roots to the lengths and finally to the tips. The waiting time is from 5–15 minutes, during which you should monitor shade development. Once the desired shade has been achieved, rinse hair. Finish treatment with a Cutrin conditioner suitable for the hair type.

SOFT & SWEET shades .12, .16, .32 and .65 are intended for light refraction and/or toning very blond hair. Recommended for use together with Cutrin Aurora 1.5% developer. The waiting time for Soft & Sweet shades is 20 min.

CUTRIN AURORA BRIGHTENING AMMONIA-FREE SHADES

SHADE WORLD OF SUN KISSED BLOND:

SUN 0.0 Natural Sun SUN 0.36 Bright Sun
SUN 0.16 Winter Sun SUN 0.7 Midnight Sun

PACKAGING

Cutrin Aurora Demi Permanent Brightening ammonia-free hair colors 60 ml

Cutrin Aurora developer 1,000 ml



INSTRUCTIONS

CHOICE OF DEVELOPER FOR CUTRIN AURORA BRIGHTENING AMMONIA-FREE COLORS

1,5 % / 3 %	When the objective is more subtle hair brightening. For hair shine treatment
4,5 %	When aiming for maximum lightening effect of approx. 2 levels

Cutrin Aurora brightening ammonia-free color mixing ratio 1:2

The mixing ratio is always 1:2 (e.g. 30 g color and 60 g Cutrin Aurora 1.5% or 4.5% developer).

Applying Cutrin Aurora brightening ammonia-free color:

You can apply the color mass to dry hair either directly from the color application bottle or with the aid of a brush. If hair contains many styling products, wash and dry hair before coloring.

Waiting time of Cutrin Aurora brightening ammonia-free color:

The waiting time is 20–40 min.

Treatment after Cutrin Aurora brightening ammonia-free color:

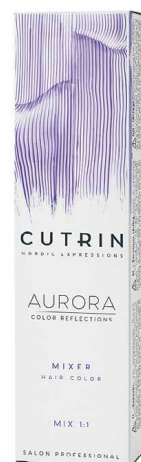
After the waiting time, emulsify hair thoroughly with a small amount of water. After emulsifying, wash and condition hair with a shampoo appropriate for Cutrin color treated hair and finally, use a conditioner intended for Cutrin color treated hair.

CUTRIN AURORA MIXER COLOR BOOSTERS

SHADE WORLD OF CUTRIN AURORA COLOR BOOSTERS

NORDIC LIGHTS – Intense shades inspired by the Aurora Borealis

- 0.11 Add Some Blue
- 0.33 Add Some Gold
- 0.43 Add Some Orange
- 0.44 Add Some Red
- 0.56 Add Some Violet



PACKAGING

Cutrin Aurora Mixer hair colors 60 ml

USING CUTRIN AURORA COLOR BOOSTERS

Cutrin Aurora color boosters are intended for use together with Cutrin Aurora permanent colors and ammonia-free hair colors. Check the instructions for Cutrin Aurora permanent color and ammonia-free color on the color packs and follow them.

Cutrin Aurora color boosters are primarily used to boost color intensity. Cutrin Aurora color boosters are very rich in color. The recommended amount of color booster is approx. 10% of the amount of color mass (e.g. 50 g Cutrin Aurora permanent color + 5 g color booster + 55 g Cutrin Aurora developer or 50 g Cutrin Aurora ammonia-free hair color + 5 g color booster + 110 g Cutrin Aurora developer).

CUTRIN AURORA LIGHTENING PRODUCTS

Cutrin Aurora Bleaching Powder is a fragrance-free lightening powder, enabling up to 7 levels of lightening. You can use all Cutrin Aurora developers with it. For foil techniques, we recommend max. 6% Cutrin Aurora developer. Not recommended for lightening techniques where the product is in contact with the skin.

Directions: Mix 1 part lightening powder and 2 parts developer into a smooth mixture. Apply mixture to dry unwashed hair with a brush or comb. Waiting time: max. 50 min, depending on the desired end result. Monitor the lightening progress continuously. After the waiting time, rinse and wash hair thoroughly. Use conditioner.

Cutrin Aurora Bleaching Powder Ammonia free is a fragrance- and ammonia-free lightening powder, enabling up to 7 levels of lightening. You can use all Cutrin Aurora developers with it. When the bleach is in contact with the scalp, you should use max. 6% Cutrin Aurora developer. For foil techniques, we recommend max. 6% Cutrin Aurora developer.

Directions: Mix 1 part lightening powder and 2 parts developer

into a smooth mixture. Apply mixture to dry unwashed hair with a brush or comb. Waiting time: max. 50 min, depending on the desired end result. Monitor the lightening progress continuously. After the waiting time, rinse and wash hair thoroughly. Use conditioner.

Cutrin Aurora Bleaching Powder with Core Defence

Technology is a fragrance-free lightening powder with new Core Defence technology to protect the hair structure during the lightening treatment. The lightening effect is up to 7 levels with the option of repeating the lightening treatment during the same day. You can use all Cutrin Aurora developers with this product. When the bleach is in contact with the scalp, you should use max. 6% Cutrin Aurora developer. For foil techniques, we recommend max. 6% Cutrin Aurora developer.

Directions: Mix 1 part lightening powder and 2 parts developer into a smooth mixture. Apply mixture to dry unwashed hair with a brush or comb. Waiting time: max. 60 min, depending on the desired end result. Monitor the lightening progress continuously. After the waiting time, rinse and wash hair thoroughly. Use conditioner.

Packaging: 500 g



CUTRIN AURORA POROSITY FILLER

Equalizes and treats damaged and porous parts of the hair before chemical treatment. Especially suitable for highly treated or lightened hair.

Directions: Spray generously and evenly to dry hair lengths and tips before coloring. Do not rinse. Color treat hair normally. This product can also be used before hair structural treatment.

Packaging: 250 ml



CUTRIN

N O R D I C E X P R E S S I O N S

CUTRIN OY | PL 27 | 02781 ESPOO

CUTRIN.FI | [FACEBOOK.COM/CUTRINPROFESSIONALS](https://www.facebook.com/cutrinprofessionals) | PUH. 0800 122 211